

# Table Of Contents

[Introduction](#)

[What's New In Version 4.0?](#)

[System Requirements](#)

[Installation](#)

[Dock Operations](#)

[Dialog Boxes](#)

[Menus](#)

[Registration/Shareware/Upgrade Information](#)

[Where To Get The Latest Version and Technical Support](#)

[Registration Form](#)

[Upgrade Form](#)

---

## **Introduction**

Application Dock is a utility that allows you access to your more frequently used applications at the click of a button. Designed to be used a replacement for or a compliment to Program Manager, it is also compatible with other Windows system shell software.

---

# What's New In Version 4.0?

## **VBRUN100.DLL No Longer Needed**

This version of Application Dock for the first time has been written completely in C++ using Microsoft C/C++ 7.0 and the Microsoft Foundation Classes for Windows. This not only brings faster execution time and a smaller program size, but also allows Application Dock to use less system resources and for the first time to be used reliably as the system shell.

## **Extraction of Icons from Windows Programs**

One enhancement made possible by the use of Windows 3.1 is the extraction of icons for use on the dock from programs (\*.EXE), Dynamic Link Libraries (\*.DLL), as well as standard icon files (\*.ICO).

## **Drag & Drop Support**

Application Dock 4.0 now fully supports the Windows Drag and Drop protocol via Windows File Manager or any other Drag-Sourcing application. This feature can be used either to place programs on the dock, or start programs on the dock with the dragged file(s) as parameters, or even to execute an application not on the dock.

## **Elimination of the Application Dock Editor**

Another enhancement made possible by the rewrite of Application Dock in C is the elimination of the need for a separate editing program for the dock. Editing of the items in the dock is now accessible from the dock itself.

## **Variable Button Size**

The size of the buttons used on the dock can now be changed between 40x40, 50x50, and 80x80 pixels. (the latter setting makes Application Dock useful on computers running high resolution displays under windows that extend icons to 64x64 pixels in size)

## **Sound Support**

For the first time, Application Dock now allows you to associate a wave form audio file with an application, which will be played back upon execution of the program from the dock. (NOTE: this feature requires you have an MPC compatible sound card and driver installed)

---

## **System Requirements**

In order to run Application Dock on your computer, you will need to be running Windows 3.1 in Standard or Enhanced mode, an EGA or higher display, and a suitable pointing device. Optionally there is support for MPC compatible sound cards through the multimedia extensions to Windows 3.1.

---

# Installation

First, if you upgrading from a previous version of Application Dock, you will need to delete the older executables, as well as dock files and the appdock.ini file. All of the file formats have changed for this version, making any old dock files useless.

To install Application Dock on your computer, simply copy the program executable (appdock.exe) and help file (appdock.hlp) to your Windows directory or any other directory in your path. The first time you run Application Dock you will be presented with the **About Application Dock** dialog. This dialog box will only appear at startup the first time you run Application Dock. You will then be presented with a blank dock, consisting of the system button and one blank button.

---

# Dock Operations

[Running Programs](#)

[Editing Items](#)

[Adding / Removing Items From the Dock](#)

[Configuring Application Dock](#)

[Drag & Drop Functionality](#)

# Running Programs

## Programs In The Dock:

To run a program in the dock, simply double click on it's button, and it will attempt to execute, following the options you specified. If the program cannot be executed for some reason, you will be presented with a dialog explaining the reason why.

## Programs Not In The Dock

To run a program not in the dock, you have two options.

1) Use the Run dialog. Pull it up, either by selecting Run from the Main Menu, or by double-clicking on the system button with the left mouse button. You can then enter the program filename (or use the Browse dialog), and select whether you want the program run minimized.

(see [Run Dialog](#))

2) Drag the program you wish to run from File Manager and drop it on the system button.

## **Editing Items**

To edit an item in the dock, bring up the menu for that item (by clicking with the right mouse button) and select Edit Item. The Edit Item dialog will then come up, from which you can change the settings for this button.

(see [Edit Item Dialog](#))

(see [Item Menu](#))



## **Adding / Removing Items From the Dock**

To add or delete an item from the dock, use the Append Item, Insert Item, and Delete Item selections from the item menu.

(see [Item Menu](#))

## **Configuring Application Dock**

To configure Application Dock, you need to pull up the Preferences dialog by selecting Preferences from the Main Menu.

(see [Main Menu](#))

(see [Preferences Dialog](#))

## **Drag & Drop Functionality**

For the first time, Application Dock uses the drag and drop protocol defined by Microsoft in Windows 3.1. This allows you to select and drop files onto the dock from File Manager. Dropping a file onto the system button will execute it, while dropping it on an item button will either put the file on the button, or use it as a command line parameter for the program set for that item.

(see [Running Programs](#))

(see [Preferences Dialog](#))

---

# Dialog Boxes

Preferences

Run

Parameters

Edit Item

Icon

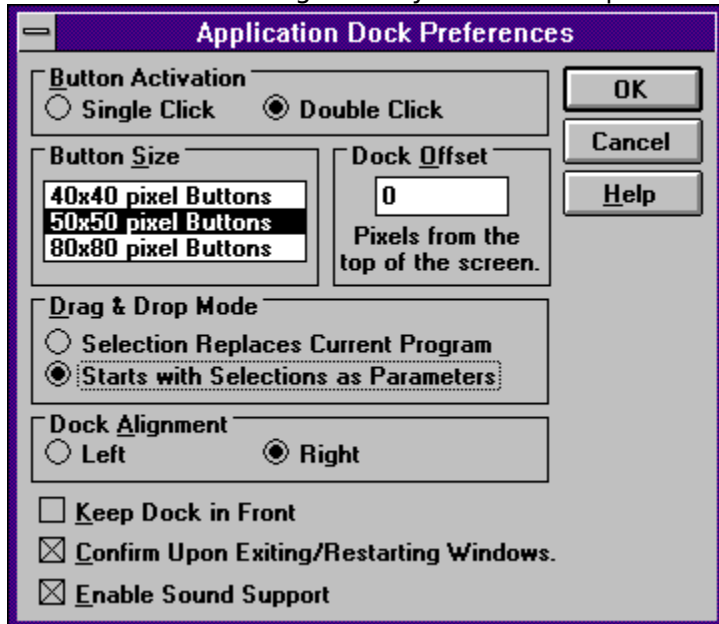
Sound

About Application Dock

Registration

## Preferences

The Preferences dialog allows you to set the preferences for Application Dock.

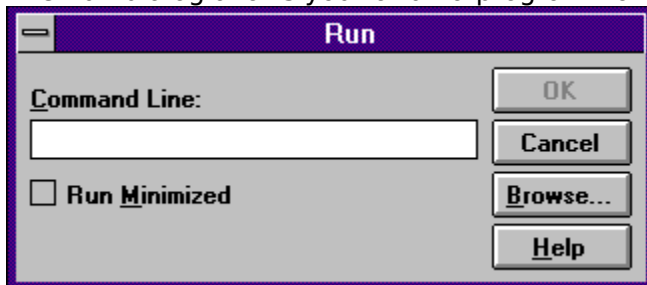


Setting	Function
Button Activation	These radio buttons set whether you want a single or double click to activate a button on the dock. (DEFAULT: Double Click)
Button Size	This list box sets the size of the buttons in the dock (in pixels). Currently button sizes of 40x40, 50x50, and 80x80 pixels are supported. (DEFAULT: 50x50 pixel Buttons)
Dock Offset	This text box sets the number of pixels you would like the dock offset from the top of the screen. (DEFAULT: 0)
Drag & Drop Mode	These radio buttons set how you want files dropped onto the dock treated. 'Selection Replaces Current Program' will take a file (or the first file if several are selected) dropped onto a button and make that the program associated with the button. 'Starts With Selections As Parameters' will take a file(s) dropped onto a button, and run the program set for that button with the dropped files as parameters. (NOTE: You can also set this from the Main Menu by selecting Drag & Drop Mode)

	(DEFAULT: 'Starts With Selections As Parameters')
Dock Alignment	These radio buttons set on which side of the screen you want the dock to be placed. (DEFAULT: Right)
Keep Dock In Front	This checkbox selects whether you want the dock to be in front of all other windows at all times, even when it does not have focus. (DEFAULT: unchecked)
Confirm Upon Exiting/Restarting Windows	If Application Dock is being used as the system shell, this checkbox will select whether you want to be prompted for confirmation upon exiting Windows from Application Dock (DEFAULT: checked)
Enable Sound Support	This checkbox selects whether you want any sound files set for various buttons played when the program is run from the dock. (DEFAULT: checked)

## Run

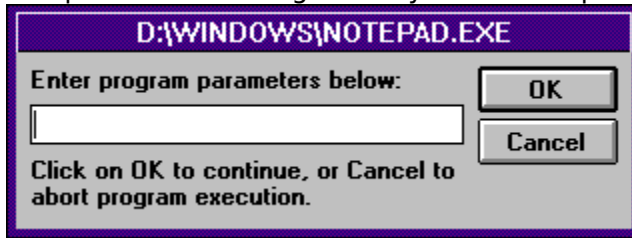
The Run dialog allows you to run a program not in the dock.



To run a program, enter its path and filename in the textbox and click on OK. Checking the Run Minimized checkbox will run the program minimized. You can also use the Browse button to bring up a file browser.

## Parameters

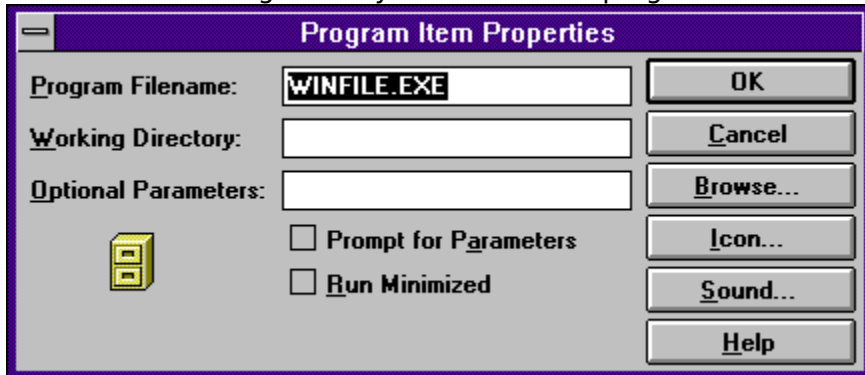
The parameters dialog allows you to enter parameters for a program when it is run.



Enter any command line parameters in the textbox. Clicking on OK will then execute the program with any parameters you entered. Clicking on cancel will close the Parameters dialog and not run the program.

## Edit Item

The Edit Item dialog allows you to set which program is associated with this button.



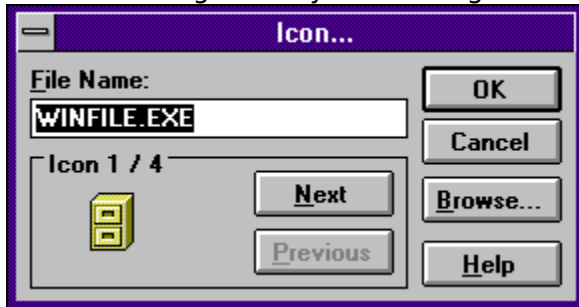
Setting	Function
Program Filename	This textbox contains the path and filename of the program to be run when this button is clicked on.
Working Directory	This textbox contains the default directory for this application.
Optional Parameters	This textbox contains any default parameters you always want passed to this application.
Prompt for Parameters	This checkbox sets whether or not you want to be prompted for additional parameters when this program is executed. (DEFAULT: unchecked)
Run Minimized	This checkbox sets whether you want this application run Minimized. (DEFAULT: unchecked)

Clicking on the Browse button will bring up a file browser to set the program filename textbox. Clicking on the Icon button will bring up the Icon Dialog, which will allow you to change the icon for this button. Clicking on the Sound button will bring up the Sound Dialog, which will allow you to set a sound you want played when ever this program is run from the dock.



## Icon

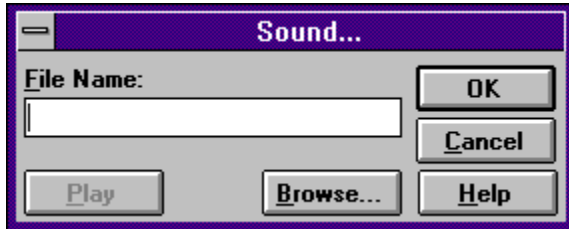
The Icon dialog allows you to change which icon is used with the button for this item.



To change the icon used for a button, enter the name of the file from which you want to extract an icon, then hit the TAB key. If any icons were found in this file, the first one will be displayed, as will as the number of icons in the file. You can use the Next and Previous buttons (when enabled) to move between the various icons in the file. The Browse button brings up the standard file browser, but for files containing icons.

## Sound

The Sound dialog allows you to set a sound (Waveform Audio File (\*.wav)) to be played whenever this item is run.



To set a sound to be played, enter its filename.(or use the Browse button) The Play button will play back the sound file if it is a valid sound file.

## About Application Dock

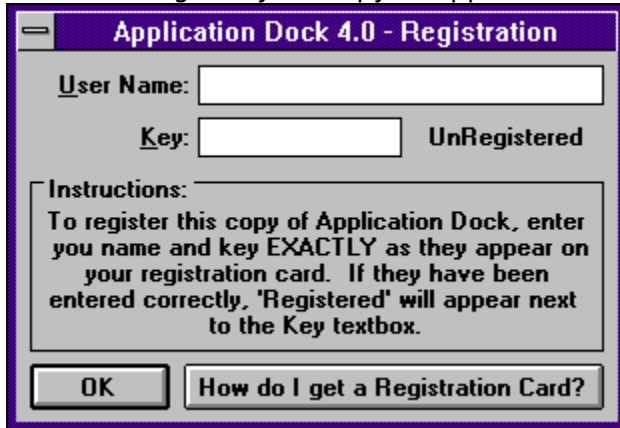
This dialog provides some brief information about the program, as well as allowing you to register your copy.



Clicking on OK will close the dialog box, which clicking on Register will bring up the Registration Dialog. If this is a registered copy, the registered user's name will be displayed in a brief thank you notice. Otherwise a brief shareware notification will appear instead.

## Application Dock 4.0 - Registration

The registration dialog allows you to enter your name and the key number, sent to you by the author, to register your copy of Application Dock and enable all restricted features.



The screenshot shows a dialog box titled "Application Dock 4.0 - Registration". It features a purple title bar with a minus sign icon on the left. Below the title bar, there are two text input fields: "User Name:" followed by an empty text box, and "Key:" followed by an empty text box. To the right of the "Key:" text box, the text "UnRegistered" is displayed. Below these fields is a section titled "Instructions:" containing the following text: "To register this copy of Application Dock, enter you name and key EXACTLY as they appear on your registration card. If they have been entered correctly, 'Registered' will appear next to the Key textbox." At the bottom of the dialog, there are two buttons: "OK" and "How do I get a Registration Card?".

To register your copy, enter your name and key number EXACTLY as they were sent to you in the corresponding textboxes. If the name and number match, 'registered' will appear next to the key number textbox. Clicking on OK will close this dialog, while clicking on 'How do I get a Registration Card?' will bring up the help topic on how to register.

---

# Menus

Main Menu

Item Menu

## Main Menu

The Main Menu is popped up by clicking with the right mouse button on the system (top) button of the dock.

<b>Menu Selection</b>	<b>Function</b>
Preferences...	This selection will bring up the Preferences dialog for Application Dock. (see <a href="#">Preferences Dialog</a> )
Drag & Drop Mode	The selection activates a submenu, allowing you to quickly select how to treat files dropped on the dock. (see <a href="#">Preferences Dialog</a> )
Run...	This selection brings up the Run program dialog. (see <a href="#">Run Dialog</a> )
Exit Application Dock / Exit Windows	This selection is set to 'Exit Windows' if Application Dock is being used as the system shell, in which case it exits Windows. Otherwise it is set to 'Exit Application Dock', in which case it will exit Application Dock.
Help	This selection pops up the Help menu, from which you can get help on Application Dock, on how to use the Windows help system, or bring up the About dialog box. (see <a href="#">About Dialog</a> )

## Item Menu

The Item menu is popped up by clicking with the right mouse button on an item button.

<b>Menu Selection</b>	<b>Function</b>
PROGRAM FILENAME	This menu selection will display the program filename of the item clicked on. It has no function, and will not respond to being clicked.
Edit Item...	This selection will bring up the Edit Item dialog for this item. (see <a href="#">Edit Item Dialog</a> )
Append Item	This selection will append a blank button to the end of the dock.
Insert Item	This selection will insert a blank button before the button clicked on.
Delete Item	This selection will delete the current button.
Help	This selection brings up help for the Item menu.

---

# Registration/Shareware/Upgrade Information

This version of Application Dock is Shareware, and is as such free for you to evaluate for a period of 15 days, After that you are required to register for continued use. Registration also puts you on the mailing list for future update notices and discounts on upgrades.

The Shareware version also carries the limitation of only allowing 6 items on the dock.

## **Why Should I Register Application Dock?**

First and foremost, to support it's continued development. I continued to expand and improve Application Dock after releasing it a little over a year ago due to the many registrations that I received.

Secondly, your registration fees also provide much needed funds to help a staving computer science student get through college.

## **How Do I Register?**

To register Application Dock, simply print out and fill in the registration form in this help file. When you register you will receive notification in the mail with your personal key number to unlock all of the features disabled in the Shareware version.

## **Upgrading From A Previous Version**

Registered users of previous versions of Application Dock can upgrade to Version 4.0 for \$5.00 instead of the usual \$10.00 registration fee. To upgrade, print out and fill in the upgrade form in this help file. You will then receive your personal key number.

---

## Where To Get The Latest Version and Technical Support

The latest versions of Application Dock will always be available on the following BBS's:

**Pacific Electric - (714) 830-7613 - Sysop: David Black**

**Top Choice - (512) 690-4437 - Sysop: Jerry Cooley**

If you encounter any problems using Application Dock, or if you have any questions about using the program, you can contact me by the following methods:

- 1) Send me a written bug report detailing both the problem and your system configuration.
- 2) Send me e-mail on the BBS's listed above.
- 3) Call me voice at (714) 830-9203 and ask for David Black. I cannot guarantee that you will always be able to catch me when I am around, and I will not return any long-distance calls. The best time to catch me usually is during the afternoon and evening hours on weekdays, and pretty much anytime on the weekends.



---

# Registration Form

## for Application Dock 4.0

### Ordering Information:

Name: \_\_\_\_\_  
Company(Optional): \_\_\_\_\_  
Street Address: \_\_\_\_\_  
City: \_\_\_\_\_ State: \_\_\_\_\_  
Zip: \_\_\_\_\_ Country: \_\_\_\_\_  
Phone(Optional): \_\_\_\_\_

### Pricing:

<input type="checkbox"/>	Single User Registration	\$10.00
<input type="checkbox"/>	Latest Version on Disk	\$5.00
Multi-User Licenses: (includes latest version on disk)		
<input type="checkbox"/>	10 to 24 Users	\$75.00
<input type="checkbox"/>	25 to 49 Users	\$150.00
<input type="checkbox"/>	50 to 100 Users	\$250.00
<input type="checkbox"/>	Unlimited (Over 100 Users)	\$500.00

Total: \_\_\_\_\_

Media Size:  3.5"  
 5.25"

Payment:  Check  
 Money Order  
 Cash

*(NOTE: For foreign orders, funds must be drawn upon a US bank. a Postal Money Order or US currency is best. Foreign orders also add an extra \$1.00 to cover Shipping and Handling on disk orders.)*

Send this completed application with payment to:

Application Dock 4.0  
c/o David R. Black  
23651 Verona  
Laguna Hills, CA 92653

---

# Upgrade Form

## **for Application Dock 4.0**

This order form is for registered users of previous versions of Application Dock ONLY.

### **Ordering Information:**

Name: \_\_\_\_\_  
Registration Number: \_\_\_\_\_  
Company(Optional): \_\_\_\_\_  
Street Address: \_\_\_\_\_  
City: \_\_\_\_\_ State: \_\_\_\_\_  
Zip: \_\_\_\_\_ Country: \_\_\_\_\_  
Phone(Optional): \_\_\_\_\_

### **Pricing:**

Single User Upgrade \$5.00  
 Latest Version on Disk \$5.00  
(For Multi-User Licenses please contact author for pricing)

Total: \_\_\_\_\_

Media Size:  3.5"  
 5.25"  
Payment:  Check  
 Money Order  
 Cash

*(NOTE: For foreign orders, funds must be drawn upon a US bank. a Postal Money Order or US currency is best. Foreign orders also add an extra \$1.00 to cover Shipping and Handling)*

Send this completed application with payment to:

Application Dock 4.0 Upgrade  
c/o David R. Black  
23651 Verona  
Laguna Hills, CA 92653

